



International Ltd.  
**dortrend**



Anti Ligature Door Handles,  
Fittings & Accessories

## Anti Ligature Range

The new range of Anti Ligature Door Handles, Fittings and Accessories from Dortrend are specifically designed to help prevent the tragedy of suicide by those who may be temporarily distressed, irrational or emotionally disturbed.

For this reason, the range is ideal for use in detention centres, hospitals, prisons, immigration centres and care centres where the safety and welfare of residents is a concern.

The sympathetic functionality of the range makes it ideal where effective and reliable control or restraint of residents may be required in extreme situations, whilst clothing and limbs are also far less likely to be accidentally trapped or damaged, further limiting unnecessary pain and distress.

## Stylish Good Looks

The Anti Ligature range is virtually maintenance free yet avoids the traditional institutionalised look of some fittings.

The Anti Ligature range combines exceptional standards of functionality and performance with a host of aesthetically pleasing design features.

For example, soft, rounded shapes and finely machined and finished surfaces make the range extremely pleasing to the eye. This means it will instantly appeal to architects, specifiers and interior designers as well as local authority and private care home managers where harmonious surroundings and lifestyle needs are of paramount importance.

## Materials

The Anti Ligature range is available in Aluminium, Polished Brass and Stainless Steel.

# Anti Ligature Turns and Escutcheons

Provided in two sizes to cover most requirements ANT3TT turns can be fitted to most clutch turn cylinders or supplied complete with clutch turn cylinder.

**ANT363TT** - Thumb turn provided in two sizes to cover most requirements. Can be fitted to most clutch turn cylinders or supplied complete with clutch cylinder.



**ANT350** - Anti ligature 50mm diameter face fix escutcheon.

**ANT350BB** - Pair of the above, bolted through.



**ANT363 BLANK** - Anti ligature 63mm escutcheon.



**ANT44** - Anti ligature cylinder turn, covers end of cylinder completely. Bolts through to ANT3 escutcheon.



**ANTIEM12** - Anti ligature bathroom turn and release. Available with or without indicator.



# Anti Ligature Pulls

## ANTWHBTAS

Pull handle bolted through door with four anti-tamper bolts. Can also be supplied face fix or back to back. Standard lengths of 300mm, 425mm, 600mm, 1000mm, 1500mm, 2100mm, or any length to order.



(Profile of ANTWHBTAS).

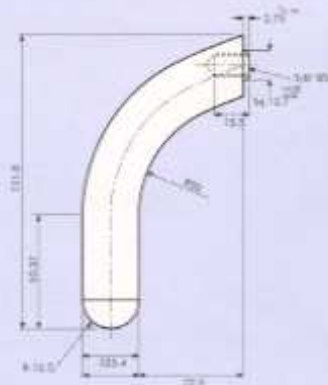
**ANT5PL** - Pull handle on plate. Also available without plate to bolt through door. Available with textured point finish for extra grip. Designed to prevent barricading whilst allowing sufficient grip to operate the door. Both versions can be fitted back to back.



**ANTFPI** - Bolt through flush pull. Box section is curved to prevent objects being forced into the slot. Supplied with anti-tamper screws. Also available fixed back to back.



**ANT2PL** - Pull handle on plate complete with anti-tamper screws. Designed with unique anti lever device to avoid leverage being applied to handle. Also available back to back.



**ANT2RR** - Pull handle on rose bolted through door with four anti-tamper bolts. Also available fixed back to back.



# Anti Ligature Knobs and Turns

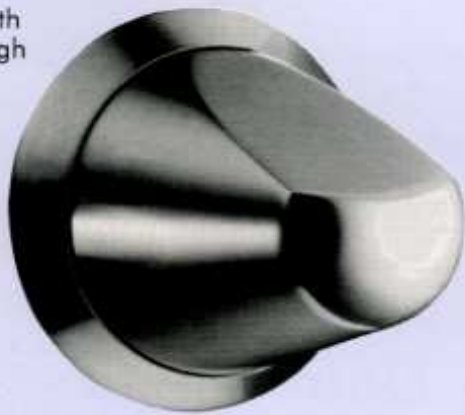
**ANT CUP** - Cupboard knob.



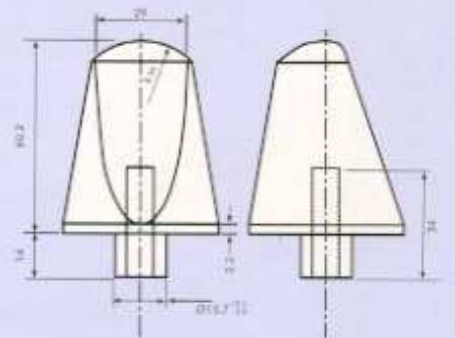
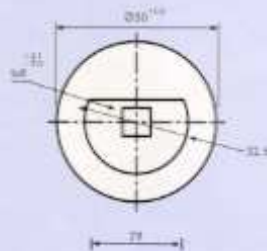
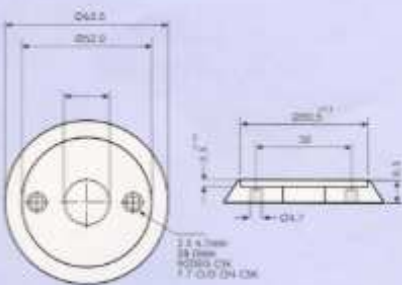
**ANT6** - Anti ligature knob with double chamfer.



**ANT1**  
Anti ligature knob with  
concealed bolt through  
fixings.



**ANTITEX**  
The ANT1 knob with  
textured finish for  
improved grip.



# Anti Ligature Lever Handles

## ANT619RDRLSTR

ANT6 knob with straight lever angled at 45°



Angle of movement



## ANTNS7

Anti ligature lever handle manufactured from 316 Stainless Steel. Supplied with a number of alternative rose fittings

# Anti Ligature Coat Hook

## ANTCHI

Designed to discourage the attachment of ligatures to the hook, which will only support the weight of the average overcoat. The domed body completes the contemporary and safe design. Available in Aluminium, Brass and Stainless Steel.



# Anti Ligature Window Handle



## ANTWIN2

Designed to be used with Espagnolette system. Please contact our sales office for application alternatives. Available in Stainless Steel only.

# Anti Ligature Door Hinge



## ANTHINGE

Designed to discourage the attachment of ligatures to the top edge of a hinge. Available in Stainless Steel or Mild Steel EPC.

## Listening To Our Customers – Ensures The Ideal Solution

The range is manufactured in a choice of aluminium, brass or stainless steel and finished in silver or textured epoxy powder coat.

This not only inhibits the effects of corrosion or pollution, it ensures that the range will retain its stylish good looks and fitness for purpose for years.

For additional peace of mind for staff and safety of residents, anti tamper fixings, bolts and tools are utilised, whilst concealed fittings limit and discourage unauthorised use.

Where additional security or design features are required, or customer's specific needs are not adequately covered in our existing range, our technical and product design experts are always on hand to listen and offer help and advice to ensure the ideal solution, no matter how unusual or demanding.

We have successfully supplied many projects where the client has specified adaptations to our standard products.

## Company Profile

We have been manufacturing high quality door and window fittings for over thirty years and employ a highly skilled team of engineers at our factory in Stourport-on-Severn in Worcestershire, which is on the outskirts of the West Midlands, the centre of engineering excellence in the UK.

Our product range is very extensive, from economy priced items through most requirements to premium priced products. We manufacture from aluminium, brass, bronze and stainless steel and can offer a wide range of fine finishes to complement the high specification materials we use.

As well as our standard products we manufacture an Anti Ligature range and fittings to assist the physically disabled and in addition can produce specials to our customers specifications.

All dimensions, weights etc. given in this brochure are approximate.

Dortrend International Limited is continually refining and improving its product range, and therefore reserves the right to alter specifications without prior notice, where this proves necessary for technical or other reasons.

Any items ordered from this catalogue are subject to our standard terms and conditions of sale, which are printed in our current price list, a copy of which is available on request.

Dortrend International Limited has taken maximum care designing these products. However the Company cannot guarantee that there are no circumstances in which self harm is not possible.



**We also manufacture a range of products for the less physically able, please contact our sales office for details, or copies of catalogues illustrated below.**



**dortrend** International Ltd.

**Dortrend International Ltd.**

Riverside Business Centre, Worcester Road, Stourport-on-Severn DY13 9BZ

Tel: 01299 827837 Fax: 01299 827094

email: [sales@dortrend.co.uk](mailto:sales@dortrend.co.uk) website: [www.dortrend.co.uk](http://www.dortrend.co.uk)